

HOSTELS, BUNKERS AND SKI-TOURIST STATIONS ON HUCULSZCZYŻNA IN HER TERRITORIAL PART IN A MOUNTAIN RANGE GORGANÓW

Stanisław ZABORNIAK^{1 A, B, F}, Łukasz SZMYD^{2 B, E, F}

1. Faculty of Physical Education, University of Rzeszow, Rzeszow, Poland

2. Department of the physical culture of the National training college for them. of Stanisław Pigoń in Krosno Poland

Keywords:

The Second Polish Republic, history of tourism, Huculsczyzna, Gorgany.

INTRODUCTION

Gorgany - mountain range being a member Beskidów Eastern in their height wildest, difficult-available, strongly converted into forest and diversified under the account, as well as divided with deep valleys of rivers, parts in so-called Woody Beskid¹.

In this part Woody Beskid was characterized in its lower part, all the way to the tree line by the beech-fir and spruce dense forestation, and above of the one border densely was covered with dwarf mountain pine, and above this floor on highest peaks rock debris spread (through local named gorganem, grechotem or with frambesioma), in some places of mountains were these are mountain pastures. Area was poorly populated, and therefore was regarded in Europe as the wildest mountains in Europe. The recalled thick dwarf mountain pine, rock debris, the rare population, as well as the poor tourist development - to 1939 in Gorganach about 30 hostels and only few marked slags functioned, it was a considerable impediment for wandering. On the Gorgan area they belonged to highest peaks (according to the height): Sywula of 1836 m a.sl, Ihrowiec of 1807 m a.sl, High 1805 m a.sl, Doboszanka of 1754 m a.sl, Grofa of 1752 m a.sl, Popadia of 1740 m a.sl, Parenkie of 1737 m a.sl, Petros of 1708 m a.sl and other smaller².

¹ J. Dziędzielewicz: *Trips around the Eastern Carpathians*, "Diary of the Tatra Company", 1877 R. 2, p. 35; L. Wajgiel: *Guide on Czarnohora and into Pokuckie Tops*, lion's-in 1885, p. 5; A. Rehman: *The Carpathians described under the physical-geographical account*, Lvov 1895, p. 57; M. Orłowicz: *Gorgany Central (sketch of the guide)*, "Diary of the Tatra Company", 1913 No. 34; W. Kubijowicz: *Monograph to antropo - geography Gorganów*, "Geographical Inspection", 1922 No. 2; A. Lenkiewicz: *Gorgany West*, "Peaks", 1923 No. 1; A. Lenkiewicz: *History of one trip*, "Peaks", 1925 No. 3; W. Kubijowicz: *Landscape individuals in the Polish Eastern Carpathians*, "Geographical Magazine", 1927 No. 5; H. Gąsiorowski: *"Orchards"* in Gorganach, "Peaks", 1927 No. 5; M. Nunberg: *Memories from Gorgany*, "Peaks", 1928 No. 6; T. Sulma: *The dwarf mountain pine and her teams in Gorgany*, "Acta Societas Botanicorum Poloniae", 1929 No. 6; from. Klemensiewicz: *30 years of the K.T.N. work*, "Tourist in Poland", 1936 No. 2; F. A. Osendowski: *Huculsczyzna, Gorgany and Czarnohora*, Poznań 1936, reprint Wrocław 1990; M. L. Jakób: *Remarks above the upper tree line in Gorganach Central*, "Sylwan", 1937 No. 2-4; W. Krygowski: *Gorgany - mountains of the charm*, "Tourist in Poland", 1936 No. 2; A. Lenkiewicz: *Gorgany*, Warsaw 1937; W. Krygowski: *In the smell of mountains and the war*, "Tourist in Poland", 1937 No. 15; Star.: *Amongst gorgański of peaks and valleys*, "Tourist in Poland", 1937 No. 3; M. Orłowicz: *With arolla pine Gorgan trail [that]*, the "Earth", 1938; W. Pol: *Diaries*, comp. K. Lewicki, Cracow 1960, p. 267; S. Hrabec: *Huculsczyzna place names*, Cracow 1950, 19-20 p., 37.

² E. Turczyński: *Trip on Sywula and High in the Eastern Carpathians*, "Diary of the Tatra Company", 1883 No. 8; R. Danyszówna: *Trip on Popadię*, the "Earth", 1911; J. Kapłon: *completing the operations of the Polish Tatra Society on Eastern Lines of the Second Polish Republic*, www.karpatywschodnie.pttk.pl, the access [2013-09-



Years 30. The 20th century "Gorgany. Tourist LPT bunkers on Małachowni (?), in the district Valley [...] Photo W. Walczak (Cracow)". Committee of Studies of the League of backing the Tourism up.



Gorgany map from the historical-tourist Guide from 1937, source: Archiwum_Map_WIG_Polski_strona_Inne_mapy_WIG.

1. Ski-tourist TKN station in the Sanatorium of the Cooperative of Roman-Catholic Priests in the town Węldziarz-Maksymówka

Ski-tourist station in the Sanatorium of the Cooperative of Roman-Catholic Priests in the town Węldziarz-Maksymówka she was located at 502 m level a.s.l, had 15 accommodation

19]; *Regulations of mountain of the Tourist PTT Badge*, Cracow 1936, p. 57, access [2013-09-19]; *Information ski calendar for the season 1937-1938*, Cracow, p. 78; map the Ukrainian Carpathians, www.e-gory.pl, the access [2013-09-19]; *information on the side*, www.karpatywschodnie.pl, the access [2013-09-19].

places at her disposal on beds. They were dawned on to the hostel from the railway station the Polish State Railways Convenience³.

2. Lodging station of the Lvov PTT Branch in the forester's lodge in Wyszków

Lodging station of the Lvov PTT Branch was located in the forester's lodge in Wyszków at 750 m level a.sl In 1937 the station on a one-off basis could put 9 persons up for the night on pallets. They were dawned on to the station from the railway station the Polish State Railways Convenience⁴.

3. Hostel of the Lvov PTT Branch on the Pass of Wyszowska by the Amenity (1937)

The hostel was located at 940 m level asl on a red trail in Gorganach. He was it is a Main Beskid Trail passing Wyszowska through the Pass (Toruń), and used the hostel wandering between the hostel in Sławsku and with hostel in the valley Świcy. The building used earlier by the Border Guard in 1937-1938 years was adapted by activists of the Lvov Branch to needs of the tourist hostel PTT⁵.



Hostel of the Lvov PTT Branch on the Pass of Wyszowska, too W. Krygowski, "History of the Polish Tatra Company".

The building put into use on a one-off basis could put 10 persons up for the night on iron beds and more distant 14 on mattresses, with time the number of people which could in the hostel stay overnight grew to 28 persons. Behind 1937 about works by the hostel we are inquiring at the PTT report on the activities the yr, that ... *in the hostel on the Pass of Wyszowska: work was performed in order to strengthen foundations and a porch was finished in front of the house. They regulated and an area was restocked in front of the hostel as well as a ... outbuilding was built*⁶. From the hostel it was possible to be guided by

³ Information ski calendar for the season 1937-1938, Cracow, p. 81.

⁴ There.

⁵ There.

⁶ Report on the activities of the Polish Tatra Society in Cracow in the period from 1 1937 IV yr to 31 1937 XII yr and financial for year 1937, Cracow 1938, p. 22

outlined tourist trails of the c 1935 yr on Gorgan Wyszowski (1443 m a.sl), on Menczu (1454 m a.sl) through Wyszkowo, Bahonkę (1339 m a.sl) and Empty Peak (1358 m a.sl)⁷.

4. hostel of the Lvov PTT Branch in the town Świca by the Amenity

Hostel of the Lvov PTT Branch in the distance of the c 5 km from the sources of a river Świcy they built at 930 m level a.sl in 1931-1932 years, according to the project of the Eng. Arch. Tadeusz Solecki from centres of the Main PTT management Board, of PTT branches Warsaw and of Tarnowski and by the backing of the Ministry of the Communication in the distance of 146 km from Lvov. Total building costs of the hostel ended with the 30 000 amount of zloty.



1937 hostel of the Lvov PTT Branch at the source of a river Świca in Gorganach, (from sets of the author).

Opening the hostel of the Lvov PTT Branch took place 16 October 1932 with the participation of representatives: Ministries of the Communication - Dr. M. Orłowicz, of ZG PTT vice-chairman - Dr. W. Majewski and of chairman of the Lvov PTT Branch - Prof. Adam Lenkiewicz. The building was bed they on the stone basement, to the building on the ground floor entered with entrance hall, and from it into the dining room, the kitchen and the big shared dormitory town. They upstairs from the entrance hall entered 3 little bedrooms, additionally above them were in garrets 4 little bedrooms were located. Right after putting into operation, in the hostel 17 persons could on a one-off basis stay overnight. In the PTT magazine "Peaks" about opening the hostel in 1932 the yr was being written, ... *to arrive at*

⁷ *Information ski calendar for the season 1937-1938*, Cracow, p. 81; *Regulations Goth 1935*, www.cotg.pttk.pl [access: 2013-03-12]; D. Dyląg: *Gorgany. Guide*, Pruszków 2008, p. 90.

the hostel it is possible with automobile road (from Lvov of 146 km); a small garage is located at a hostel. [...] for opening numerous tours of neighboring PTT Branches not to say a trip arrived the Warsaw Branch, representatives of authorities etc. In the number of 150 people. They contributed to building costs with subventions: Ministry of the Communication, Main PTT management Board, Branches Warsaw and Tarnów ...⁸.



Tourists in the railroad car specially adapted for the personal transport of forest queue which went to and fro on the area Gorganów, "Tramp". *Eastern – Carpathian forest queues, "Tourist in Poland", 1937 No. 3.*

After 5 years of activity and made reconstructions, the hostel could accept to accommodation of 34 persons, including 20 persons on metal beds, and 10-14 on pallets. Building costs of the hostel along with the levelling of the area and fit-out costs amounted to the 30 thousand PLN.

To the World War II Paulina Podberezka managed the hostel. In 1937 in the hostel 520 persons stayed overnight. They used it Wyszkwoskie wandering in Gorgany, the Ilemskie Egg and Mołoda. From 1935 in the hostel a postal-telecommunications agency functioned, and by it a garage was built for motorized tourists⁹.

They used the hostel wandering with red trail, among others on routes: on Ukiernię (1622 m a.sl); on Ukiernię through the Pass Sołotwinka (1355 m a.sl) and Szywanię (1643 m a.sl); to the Peak Mołody (1728 m a.sl) through the Pass Sołotwinka; to the Egg Ilemskie (1655 m a.sl); on Gorgan Wyszkwoski (1443 m a.sl); on Megłę Large (1312 m a.sl) through Megłę Small (1240 m a.sl), as well as on Menczył (1454 m a.sl)¹⁰.

5. waste bunker of the Lvov PTT Branch on the Pass Sołotwinka (1936)

Pass Sołotwinka is stretching at 1355 m level a.sl With effort of members of the Lvov PTT Branch in 1936 on the Pass Sołotwinka a bunker which ensured the possibility of the rest and the possible refuge was started oneself with accommodation on pallets inclusive for 10-15 persons.

⁸ *New hostel in Gorgany, "Peaks", 1932 No. 10, p. 190.*

⁹ *Information ski calendar for the season 1937-1938...*, qtd. d., p. 81; D. Dyląg: *Gorgany. Guide*, Pruszków 2008, p. 81; R. Bogdziewicz: *Mountain hostels. From Silesian Beskid to Czarnohory in 1874-1945 years*, Lublin 2012, p. 223.

¹⁰ *Information ski calendar for the season 1937-1938 ...*, qtd. d., p. 81. D. Dyląg: *Gorgany ...*, qtd. d., p. 91; *Regulations Goth 1935*, www.cotg.pttk.pl [access: 2013-03-12].



Bunker on the Pass Sołotwinka, W. Krygowski: *Mountains of my life*, Cracow 1987, p. 29.

The bunker functioned without the host. Władysław Krygowski in one's drawing up the Fri.: about the hostel and surrounding him wrote *Mountains of my life*, ... ow, was the one *Sołotwinka with marvelous wilderness. So beautiful that we forgot then about everything other, about Hitler, threatening the war, about exercises of servicemen, soon which ... two of us were appointed as*¹¹.



Narodowe Archiwum Cyfrowe, sygn. 1-P-2207-22

1931 Participants in the hunt of bear in the forest district Sołotwina, in forests belonging to the count of Adam Zdzisław Zamoyski in railroad cars of the narrow-gauge queue. Participants in hunting among others: manager of the forest district Mizuń - Kosterkiewicz, count Adam Zdzisław Zamoyski, editor Jan Lankau and Alfredas' count Potocki, NAC sets, ref. 1 - P-2207-22.

¹¹ W. Krygowski: *Mountains of my life*, Cracow 1987, p. 29.

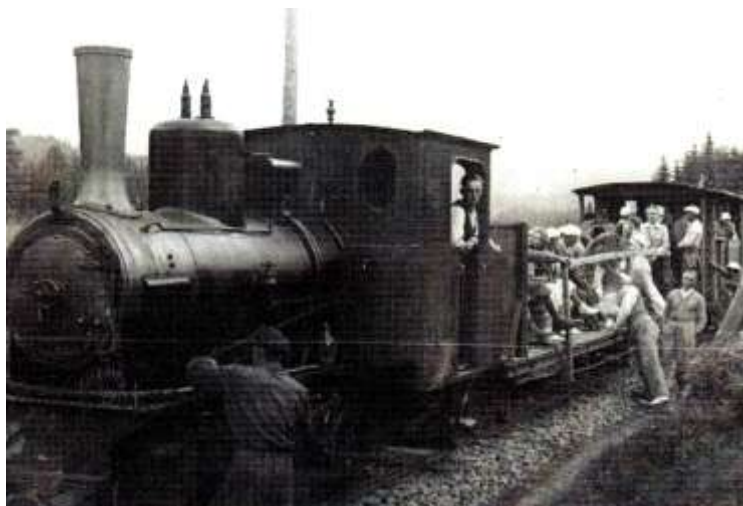
Within nine years of the moment of first giving back its hostel, the Lvov PTT Branch built in Gorganach West four hostels and two waste bunkers¹².

6. Lodging station of the PTT Branch Of the times of the reign of Stanislaus II 1764-1795 in the inn M. Kapustianykowa in the town Broszniów by Krechowiec

The Lodging station of the PTT Branch Of the times of the reign of Stanislaus II 1764-1795 was located at 346 m level asl in the inn M. Kapustianykowa in the town Broszniów by Krechowiec. They were dawning on to the hostel from the railway station the Polish State Railways Broszniów. On a one-off basis in the station it was possible to use accommodation on 5 beds¹³.

7. hostel of the Lvov PTT Branch in the Valley Mołody (1937)

Hostel in the Valley Mołody built to heights of 720 m a.sl put into operation in 1937 was a building successive initiative of activists of the Lvov PTT Branch. an Eng. designed him Arch. Tadeusz Solecki, material a Glesingera company delivered, and local carpenters were his immediate contractors. By the hostel a stop of the forest queue was located - Kruhla¹⁴.



Forest queue with the platform adapted for the transport of tourists, years 30. The 20th century, "Tramp". Eastern – Carpathian forest queues, "Tourist in Poland", 1937 No. 3.

Wood delivered to the building site as it turned out were strict material which after building cracked. A commentator wrote the yr from PTT activity in 1937 about it ... *in the hostel in Mołodzie a need for caused amendments turned out to be withering of wood material, which how results from it, into standing not quite dry a Glesinger company delivered to the Branch; boarding some inner walls was exchanged what was made Glesinger on the house. [...] a ... Border Guard is seizing one room on the ground floor intended for the administrator*¹⁵.

¹² ...Wandering today with overgrown slags Gorganów will find none of them. Sometimes they will testify some remains sticking out above grass of foundations to them...

¹³ There, p. 82.

¹⁴ B. Rudziński: *Communicative Problem of Mountain Soil*, [in:] K. Pawelski (ed.): "Generation of Mountain Soil", Warsaw 1939, 176-188 p.

¹⁵ *Report on the activities of the Polish Tatra Society in Cracow in the period from 1 1937 IV yr to 31 1937 XII yr and financial for year 1937*, Cracow 1938, p. 22.



Hostel in the Valley Mołody, before 1939

Three the hostel consisting of more than one storey of the Lvov PTT Branch had rooms 2, 3 and 4 local, which altogether 25 persons could stay overnight, in additionally to 9 persons it was possible to stay the night on pallets in the group room.

By the hostel in 1935 tourist trails were appointed as the Peak Mołody (1728 m a.sl) and farther through Sywonię (1634 m a.sl) on Ukiernię (1622 m a.sl), as well as to the Egg Perehińskie (1600 m a.sl), on Grofę (1752 m a.sl) and on Grofę by the Horse of Grofecki (1332 m a.sl)¹⁶.

8. Ski-tourist TKN station in the national shooting box Kuźmieniec wheel Osmołody

Ski-tourist TKN station in the town Kuźmieniec wheel Osmołody was located at 685 m level a.sl in the national shooting box being involved in a State Forestry Commission Jasień. They were dawning on to the hostel from the railway station the Polish State Railways with forest queue which stopped near the forester's lodge. On a one-off basis in the station it could stay overnight on beds 4 persons¹⁷.



1926 view on the hostel in the town Osmołoda in Gorganach, phot. from. Z. Klemensiewicz, *Polish Skiing*, vol. II, of *Generations Polish Of Ski connection*, Cracow 1927, p. 45.

¹⁶ D. Dyląg: *Gorgany. Guide*, Pruszków 2008, p. 91; *Regulations Goth 1935* www.cotg.pttk.pl [access: 2013-03-12]

¹⁷ *Information ski calendar for the season 1937-1938 ...*, qtd. d., p. 82.

9. hostel of the Lvov PTT Branch above Jala in the Valley Łomnicy

Hostel in the valley Łomnicy (on Jala¹⁸) - they built by the red trail on the eastern side Łomnicy on the height of 750 m a.sl The building was located by the existing there earlier forester's lodge and the stop of the forest queue in Ryzarni¹⁹. Building with effort of the Branch of the Lvov Polish Tatra Society in 1926 a yr was finished, and his ceremonial opening took place 16 June 1927.



1926 View on the tourist hostel in the Jali Valley in Gorganach before ceremonial opening, photo: A. Siermontowski, NAC sets, ref. 1 - S-3739-2.

The hostel was equipped with 20 beds, and at using pallets could hold 10 additional people. The dining room was equipped with 14 tables and of tables, the bench and the chair, but the wall decorated photographer, among others authorships of Zygmunt Klemensiewicz²⁰.



1926 Opening ceremony of the tourist hostel in the Jali Valley in Gorganach, photograph: A. Siermontowski, NAC sets, ref. 1 - S-3739-1.

¹⁸ With Jala expression or Jał walking the stream to the river was being named, A. Zieliński: *Carpathian "klauzy"*, "Tourist in Poland", 1935 No. 1.

¹⁹ "Tramp". Eastern - Carpathian forest queues, "Tourist in Poland", 1937 No. 3.

²⁰ *Report of the PTT Branch in Lvov*, "Peaks", 1932 (10), p. 36.

For staying in the hostel in 1928 J. Kolankowski recalled the Fri. in the article: *On Jali* placed in "Diary of the Polish Tatra Company" from 1994 the yr wrote, ... *but the hostel! Wooden house only just built with the verandah. Lovely. Warm, resinous. Decorative dining room beautiful photograph authorships of Adam Lenkiewicz and Zygmunt Klemensiewicz. Cosily, sheltered. Here he never has crowds. The wolf isn't a winter with rarity. [...] for a night's rest sex came off separate (you in the small room on the ground floor). Today it looked in order to it to the complete eccentricity. There were no snoring or squelching are heard on the garret. However everything is pointing, that "chicks", at least not in the stream, however washed it oneself ...*²¹.



1927 Hostel in the Jali Valley into Gorganach, NAC sets, ref. 1 - S-3740.

Participants in walks used the hostel with slags marked from 1935: on Kanusiak Small (1624 m a.sl); on Kanusiak Large (1647 m a.sl); on Barren Kływę (1563 m a.sl); on Studeneć (1605 m a.sl); on High (1805 m a.sl); and through the bunker on Borewce on Sywulę (1836 m a.sl); on Sywulę through the End Gorganów (1611 m a.sl); on Sywulę with Bytryka valley; on Grofę (1752 m a.sl) through the mountain pasture Płyśce; on Popadię (1742 m a.sl) through Petros (1708 m a.sl) and Koretwynę (1595 m a.sl); and on Popadię with Petrosa valley²².

10. station TKN Turystyczno-Narciarska in the national forester's lodge in the town of Gifts wheel Broszniowa

Station TKN Tourist - Skiin Darowie was located in the national forester's lodge at 850 m level a.sl It was possible to reach the hostel with forest queue from the railway station Polish State Railways in Broszniów. The TKN station on a one-off basis could put persons up for the night on beds²³.

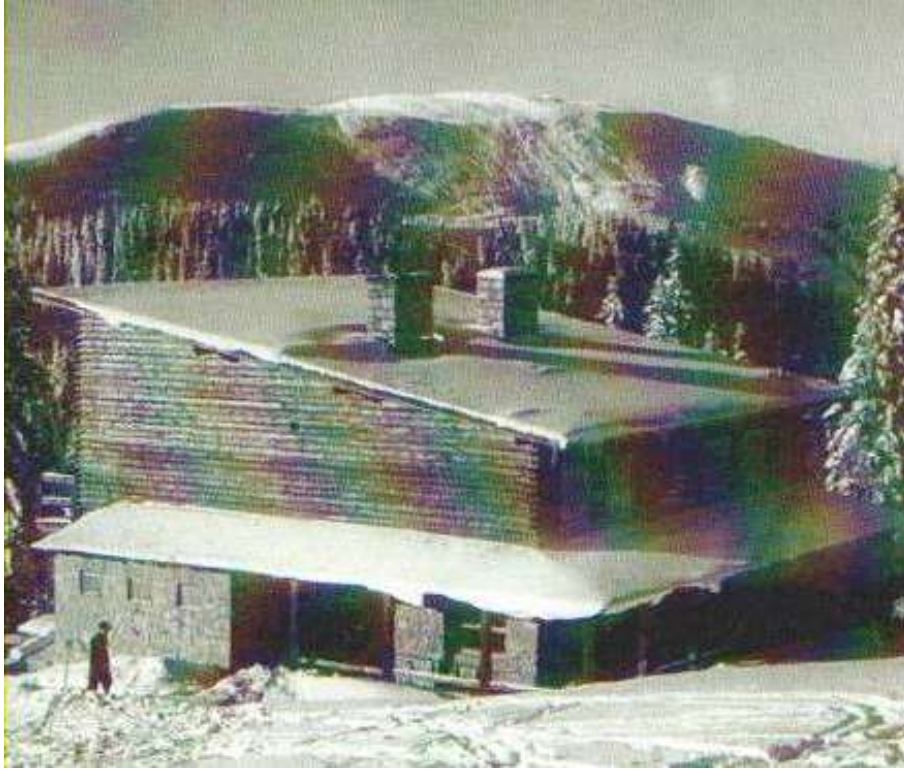
11. hostel of the Lvov PTT Branch on Ruszczyńie under the Sywuli peak (1938)

The hostel of the Lvov PTT Branch was located on the Ruszczyzna mountain pasture under Sywulę in Gorganach on the height of 1350 m a.sl It was built in 1938 from the initiative of the Branch of the Lvov Polish Tatra Society according to the project Eng. Tadeusz Solecki.

²¹ J. Kolankowski: *On Jalu*, "Diary of the Polish Tatra Company", 1994 No. 3.

²² D. Dyląg: *Gorgany*, qtd. d., p. 92; *Regulations Goth 1935*, www.cotg.pttk.pl [access: 2013-03-12]

²³ *Information ski calendar for the season 1937-1938 ...*, qtd. d., p. 82.



View on the hostel on Ruszczyńie of the about 1938 yr.

It had 14 beds and 10 pallets, to a maximum could hold 24 people and additional 10 could stay overnight on pallets in the waste bunker existing by the hostel²⁴.



1938 r. Przed schroniskiem pod Sywulą. Trzeci z prawej Mieczysław Orłowicz.

12. Lodging station of the PTT Branch Of the times of the reign of Stanislaus II 1764-1795 in the inn T. Srebuńczaka in the town Sołotwina by Nadwórnej

The Lodging station of the PTT Branch Of the times of the reign of Stanislaus II 1764-1795 in the town was located at 420 m level a.sl in the inn T. Srebuńczaka in Sołotwinie by

²⁴ *Report on the activities of the Polish Tatra Society in Cracow in the period from 1 1937 IV yr to 31 1937 XII yr and financial for year 1937*, Cracow 1938, p. 22; *Information ski calendar for the season 1937-1938 ...*, qtd. d., p. 82; D. Dyląg: *Gorgany ...*, qtd. d., p. 93.

Nadwórnjej. It was possible to dawn on to the station from railway stations the Polish State Railways in Stanisławs or in Nadwórnjej. On a one-off basis in the station 14 persons could stay overnight in it 4 on beds and 10 on pallets²⁵.

13. Ski-tourist TKN station in the lumber mill of Polish – Swiss industry forest company S.A. in the Porohy town above Golden Bystrzycą by Nadwórnjej

Ski-tourist TKN station in the Porohy town above Golden Bystrzyca by Nadwórnjej was located at 500 m level a.sl. in the lumber mill of Polish – Swiss industry forest company S.A.

It was possible to dawn on to the station from the railway station the Polish State Railways in Stanisław or in Nadwórnjej. On a one-off basis in the object it could stay overnight on beds 4 persons²⁶.

14. Lodging station of the PTT Branch Of the times of the reign of Stanislaus II 1764-1795 at Grzegorz Julisza in the Porohy town above Golden Bystrzycą by Nadwórnjej

Lodging station of the PTT Branch Of the times of the reign of Stanislaus II 1764-1795 in the Porohy town above Golden Bystrzycą by Nadwórnjej was located at 500 m level a.sl at Grzegorz Julisza. On a one-off basis she could put 40 persons up for the night on beds. They were dawning on to her from railway stations the Porohy Polish State Railways²⁷.

15. Ski-tourist TKN station in the forester's lodge of Polish – Swiss industry forest company S.A. in Łopuszna under Sywułą by Nadwórnjej

Ski-tourist TKN station in Łopusznej under Sywułą by Nadwórnjej was located at 780 m level a.sl in the forester's lodge of Polish – Swiss industry forest company S.A.



Before 1914 boarding house in Łopusznej, (postcard from sets J. Ruciński).

The station had 4 accommodation places on beds. They were dawning on to her from railway stations the Polish State Railways in Stanisławs or Nadwórnjej²⁸.

²⁵ *Information ski calendar for the season 1937-1938 ...*, qtd. d., p. 82.

²⁶ There.

²⁷ There p.82-83.

²⁸ There, p. 83.

16. Two waste bunkers of the Kaluga PTT Wheel on the Borewka Pass under Sywułą by Nadwórnjej (1930)

Between platforms High and Łopuszną- Sywułą which the Borewka Pass separated passed an often used tourist trail leading Jali from the hostel beside in the Valley Łomnicy in direction on Sywułę and farther in direction to the town Rafajłowa in the Bystrzycy Valley.



Bunker on Borewce, W. Krygowski: *History of the Polish Tatra Company*.

In the destination of creating easy terms in 1931 for wandering on the Borewka Pass with effort of the PTT Branch Of the times of the reign of Stanislaus II 1764-1795, too PLN 1000 bunkers were being adopted dating back to the World War I to the lodging room for tourists. In 1931 about 300 persons used the room. Keys to the bunker were being picked up in the PTT Wheel in Kałusz.



1934 Tourist hostel - summer bunker on the Borewka Pass in Beskidy Eastern, NAC sets, ref. 1 - S-3723.

In 1934 the other more comfortable bunker 2 was handed over to the yr for use of tourists chamber bunker, which on comfortable divan beds on a one-off basis could stay overnight in 32 persons. By the main building fitting for the guarding caretaker found the hostel. From 1934 on the trail both bunkers provided sheltering for wandering tourists for the

yr, older from 1931 in the winter, and newer from 1934 in the summer. A PTT Circle managed bunkers from Kałusza among others secretary of the circle Prof. Jan Sytnik²⁹.

17. Lodging station of the PTT Branch Of the times of the reign of Stanislaus II 1764-1795 at Leon Grüssgotta in the town Nadwórna

Lodging station of the PTT Branch Of the times of the reign of Stanislaus II 1764-1795 in the town Nadwórna was located at Leon Grüssgotta on the height of 431 m a.sl In the station 5 persons could stay overnight³⁰.

18. Ski-tourist station of TKN and the PTT Branch Of the times of the reign of Stanislaus II 1764-1795 in the boarding house "Knollówka" of Leon Knolla by Nadwórnej Green at the town

The Ski-tourist station of TKN and the PTT Branch Of the times of the reign of Stanislaus II 1764-1795 Green at the town by Nadwórnej was located in the boarding house "Knollówka" of Leon Knolla on the height of 600 m a.sl They were dawning on to the station from the railway station the Polish State Railways Nadwórna, with forest queue. On a one-off basis in the building "Knollówka" 50 persons could stay overnight, in it 30 on beds and 20 on pallets³¹.

19. Hostel of the Warsaw Club of Skiers in by Nadwórnej Rafajłowa (1938)

WKN hostel in the village Rafajłowa (at present Bystrica) was located in Gorganach at 800 m level a.sl It was built from the initiative of WKN activists in 1937.



1938 r. schronisko Warszawskiego Klubu Narciarskiego we wsi Rafajłowa w Gorganach, fot.: W. Pikiel zbiory NAC, sygn. 1-S-3772-1.

The Warsaw organization received the subsidy of the Department of the Tourism of the Ministry of the Communication. Ceremonial opening the building took place in the course of

²⁹ *Information ski calendar for the season 1937-1938 ...*, qtd. d., p. 83; D. Dyląg: *Gorgany ...*, qtd. d., p. 93

³⁰ *Information ski calendar for the season 1937-1938 ...*, qtd. d., p. 83.

³¹ There.

the cyclical party March with Trail of the II Brigade of Legions on the day of 17 February 1938.



1938 entering the hostel of a Warsaw ski club in the village Rafajłowa is standing in Gorganach, in the door man, on with door evident aegis with the name of the hostel and the flag, NAC Protestant congregations, photo: W. Pikiel, NAC sets, ref. 1 - S-3772-2.

A design for a building carried out of the authorship of the architect of Waclaw Wekera showed the lump in the style Hutsul "grazdy"³². The object on a one-off basis could put 160 persons up for the night. He had dining room, day room, main and tourist kitchen. He was equipped with central heatings, the current cold water and showers with warm water³³. He arrived at the hostel oneself with forest queue from the railway station Polish State Railways in Nadwórnej.



1938 skier in front of the hostel of a Warsaw ski club in the village Rafajłowa into Gorganach, NAC sets, phot.: W. Pikiel, NAC sets, ref. 1 - S-3772-4.

³² **Grażda** - in the first form fortified manor house, with small window openings (with shooting ranges) barred, secured additionally with shutters, in twenty-four hours interwar developed form a few chamber cottages with the backyard closed with fence (ograżdą) built from thick arranged beams coronary and covered with the small roof, closely connected with the integrity of the assumption. The fence had a passage (arcade - huc. Pidganielub pidsinie) between the closed backyard and the inside of the cottage, with which they entered the entrance hall - huc. chromiums. Until today on Huculszczczyźnie behaved few grazdy (c 11 buildings of this type), J. Żukowski: *Huculszczczyzna. Monographs on the research on folk buildings*, Warsaw 1935; J. Żukowski: *Scout tourist hostel on Kostrzycy in Czarnohora*, "Architecture and the Construction", 1936 No. 7, 209-213 p..

³³ *WKN hostel in Rafajłowa*, "Tourist in Poland", 1938 No. 4.

The hostel burnt down at the end 1944 during fights of Polish guerrillas against Germans. By the hostel in 1935 tourist trails were outlined among others on: Sywulę (1836 m a.sl) through Bojaryn (1679 m a.sl), on Sywulę through Maksymiec (1489 m a.sl), on Sywulę with Salatruka valley, to the Rogodze Pass Large (Pantyrzka - 1110 m a.sl), to Bratkowska (1792 m a.sl), on Black Klewę (1723 m a.sl). on Doboszanke (1754 m a.sl) through Doużyniec, Ozirny and Medweżyk (1737 m a.sl), on Doboszanke through Poleński (1694 m a.sl) and Piekun (1657 m a.sl), on Płoskę (1355 m a.sl), for the Cross-breeding (1161 m a.sl)³⁴.

20. Ski-tourist TKN station at the forester T. Ciesielski in by Nadwórnej Rafajłowa

The Ski-tourist TKN station in by Nadwórnej Rafajłowa was located at 759 m level asl in the forester's lodge at the forester T. Ciesielski. The building could put 15 persons up for the night on beds. They were dawning on to the hostel with the forest queue which went to and fro from the railway station the Polish State Railways in Nadwórnej³⁵.

21. Lodging PTT station in the inn L. Wundermana in by Nadwórnej Rafajłowa

The Lodging PTT station in by Nadwórnej Rafajłowa was located in the inn L. Wundermana. On a one-off basis she could put 30 persons up for the night in it 10 on beds and 20 on pallets. They were arriving at the hostel with forest queue from the railway station Polish State Railways in Nadwórnej³⁶.



Hostel on Pantyrze, postcard given by Wundermanna, it was placed in the article of Jan Skłodowski Fri.: Wundermann in Rafajłowa, in "Płaju" No. 32.

22. the PTN hostel and TKN above the Pass by Nadwórnej Pantyrzka

For their hostel activists of the Przemysł Company of Skiers chose the place at 1120 m level a.sl on the Pantyr mountain pasture in Gorganach. The building was surrendered in 1935

³⁴ *Hostel on Pantyrze*, "Tourist in Poland", 1935 No. 1; *Regulations Goth 1935*, www.cotg.pttk.pl, [access: 2013-03-12]; *W.T.N. Hostel in Rafajłowa*, "Tourist in Poland", 1938 R. 4, No. 2, p. 11; D. Dyla: *Gorgany. Guide*, Pruszków, 94-95 p.; *WKN people in the World War II*, wkn.pl, the access [2013-10-31].

³⁵ *Information ski calendar for the season 1937-1938 ...*, qtd. d., p. 83.

³⁶ There.

through PTN at the participation of the Company of disseminating the Skiing. The proprietor of the hostel could provide putting 22 tourists up for the night³⁷.



1935 Hostel on the Pantyr mountain pasture, NAC sets, ref. 1 - S-3764.

About the existence of the PTN hostel on the Pantyr mountain pasture Dr. M. Orłowicz recalls the yr in the report from the held hike in 1936 along with the group of Przemyśl tourists. Trip going along the route from the side of the Pass of Legions to accommodation reached the PTN hostel on Pantyrze.



1937 Fragment of the map with the location of the tourist hostel on Pantyrem,

http://www.karpatywschodnie.pl/forum/viewthread.php?forum_id=2&thread_id=111&rowstart=20

³⁷ *New hostel above the Pass Pantyrska*, "Tourist Messages" 1935, R. 5, No. 1, p. 3; D. Dylağ: *Gorgany ...*, qtd. d., p. 94.

On Pantyrze also W. Krygowski is mentioning the hostel in its relation ... *Fedor from Steszory ... in of couples of years later we went with Zosia from Rafajłowa and having passed, let alone the built hostel on the Pantyr mountain pasture, we waded in high grass for Bratkowska to Steryszorze ...*³⁸.

23. Ski-tourist TKN station in the national forester's lodge in the Durniecie by Rafajłowej town

Ski-tourist TKN station in the Durniec by Nadwórnej town was located in the national forester's lodge at 820 m level a.sl They were arriving at the hostel with forest queue on the route to Rafajłowa. The TKN station could put persons up for the night on beds 4³⁹.

24. Ski-tourist TKN station in the national forester's lodge in the town Kruhły Łuh under by Rafajłowej Bratkowska

Ski-tourist TKN station in the town Kruhły Łuh under by Rafajłowej Bratkowska was located at 825 m a.sl in the national forester's lodge. The TKN station could put persons up for the night on beds 4. They were arriving at the hostel with forest queue running on the route to Rafajłowa⁴⁰.

25. PTN hostel in the Steryszora by Rafajłowej town (1935)

Hostel on the Steryszora mountain pasture - was a building successive initiative of activists of the Przemysł Company of Skiers. The hostel was tourist, located at 1420 m level a.sl on the Steryszora mountain pasture on north slopes of Black, called also Klewy Steryszorą in Gorganach or with the Black mountain pasture. The hostel was started up in 1935⁴¹.



PTN hostel on the Steryszora mountain pasture, ITA J. Kolankowski.

At first the wooden building in the style of Hutsul architecture had 23 beds at its disposal, and at exploiting to the maximum pallets filled up with hay could hold 30 people⁴².

26. Ski-tourist TKN station in the national forester's lodge in the Ozirny town in the Valley Doużyńca by Nadwórnej

³⁸ *Hostel on Pantyra*, "Tourist in Poland", 1935 No. 1.

³⁹ *Information ski calendar for the season 1937-1938 ...*, qtd. d., p. 84.

⁴⁰ There.

⁴¹ There.

⁴² There, p. 84.

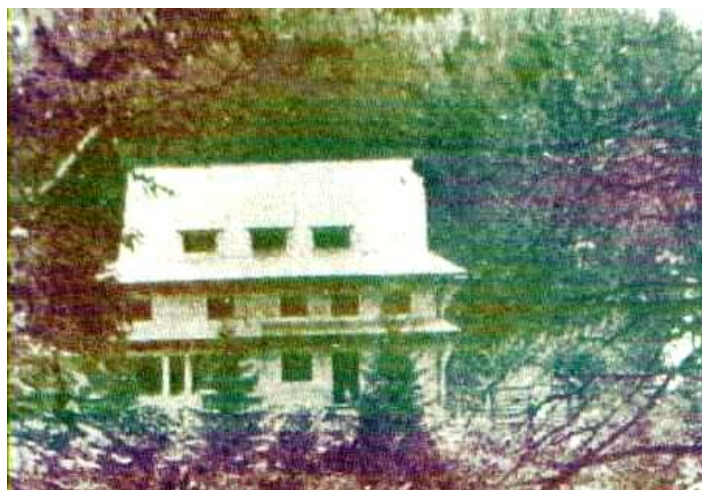
Ski-tourist TKN station in the Ozirny town in the Valley Doużyńca by Nadwórnjej was located in the national forester's lodge at 820 m level a.sl In the building they had 4 accommodation places at their disposal. They were arriving at the hostel with forest queue from the railway station Polish State Railways in Nadwórnjej⁴³.

27. Ski-tourist TKN station in the national forester's lodge in the town Sołonec in the Valley Doużyńca by Nadwórnjej

Ski-tourist TKN station in the town Sołonec in the Valley Doużyńca by Nadwórnjej was located in the national forester's lodge. They were arriving at her with forest queue from the station in Nadwórnjej. The building had 4 accommodation places at its disposal⁴⁴.

28. hostel of the PTT Branch Of the times of the reign of Stanislaus II 1764-1795 on the mountain pasture Niżna under Doboszanką by Nadwórnjej (1927)

PTT hostel on the mountain pasture Niżnej was located in Gorganach on south slopes of the Doboszanki mountain (1754 m a.sl) in the Zubrynki Valley on the height of 1000 m a.sl⁴⁵.



PTT hostel on the mountain pasture Niżnej in the Zubrynki Valley.

The object came into existence from the initiative of activists of the PTT Branch Of the times of the reign of Stanislaus II 1764-1795 in 1927 of the yr At first the object was waste which took care of living in it constantly - game warden. On a one-off basis the object could put 20 persons up for the night on pallets. The hostel along with finishing construction made plans of the new building was supposed to be undressed.

By the hostel in 1936 tourist trails leading from the Zubrynki Valley were outlined on Doboszankę, on Syniak (1655 m a.sl) by Pohar poor old women (1484 m a.sl) and Small Gorgan (1600 m a.sl), for the Cross-breeding (1154 m asl) and farther, to Rafajłowa or on Płaskę 1355 m a.sl) and Douhę (1368 m a.sl), to Jaremczy through Szczewkę (1238 m a.sl) or Bukowicę (994 m a.sl)⁴⁶.

⁴³ There.

⁴⁴ There.

⁴⁵ H. Gąsiorowski: *Trip on Doboszanka*, "Diary of the Tatra Company", 1904 No. 25.

⁴⁶ *Report on the activities of the Polish Tatra Society in Cracow in the period from 1 and 1938 ro 31 1938 XII yr and financial for 1938*, Cracow of 1939 m p. 23; D. Dyląg: *Gorgany: Guide*, Pruszków 2008, p. 95; *Regulations of mountain of the Tourist PTT Badge*, Cracow: 1936, for 68-70 Sr. [2013-09-16 access]; *Information ski calendar for the season 1937-38 ...*, qtd. d., p. 84.

29. hostel of the PTT Branch Of the times of the reign of Stanislaus II 1764-1795 under Doboszanką at Klauzie Zubrynki the Hostel of the PTT Branch Of the times of the reign of Stanislaus II 1764-1795 was located in Gorganach at klauzie Zubrynki below the Doboszanki peak⁴⁷ on the height of the c 1040 m asl The object came into existence in 1938 thanks to the organizational activity of activists of the PTT Branch Of the times of the reign of Stanislaus II 1764-1795. on a one-off basis in the hostel 20 persons could stay overnight on beds, and on pallets additionally 10 persons⁴⁸. By the hostel in 1935 leading tourist trails were outlined on: Doboszankę (1757 m a.sl); Syniak (1665 m a.sl) by Pohar poor old women (1484 m a.sl) and Small Gorgan (1600 m a.sl); on Szczewkę (1238 m a.sl) and farther to Jaremczy; for the Cross-breeding (1161 m a.sl); on Bukowicę (994 m a.sl).



Wasył drummer boy⁴⁹, famous in the environment Huculów Czarnohorski highland robber, living in the first half The 18th century

⁴⁷ **Klauza** - building hydrotechnical, intended to stack up waters of the river or the stream to the purpose of the periodic improvement in their navigability. Name from German (die Klause, from Latin clausus - "closed off"), met mainly in the range of the ancient Austro-Hungarian empire, in it particularly in the Carpathians. Klauzy was being built on watercourses which were used for the floating of hewn wood in mountain (mainly) forests to more low put centres of the processing of this wood. Widely they were applied from the beginning the 19th century up to years 70. Of the 20th century (e.g. on Huculszczyźnie, mainly in the Czeremoszu river basin). They had a form of dams, collecting considerable quantities of water, drained next in the stated time, in order to enable the floating of wood collected earlier below them. On the largest rivers they were building big klauzy, which - after opening them - allowed for floating \ "on wave\" of broken rafts from biggest of even tree trunks. On smaller streams they were building smaller klauzy, used for floating of short wood, so-called "szczapu", applied mainly for the production of charcoal for the metallurgy, and then - as the raw material to the dry distillation of wood; A. Zieliński: *Carpathian "klauzy"*, "Tourist in Poland", 1935 No. 1.

⁴⁸ *Information ski calendar for the season 1937-1938 ...*, qtd. d., p. 85; D. Dyląg: *Gorgany. Guide*, Pruszków 2008, p. 94; *Regulations Goth 1935*, www.cotg.pttk.pl [access: 2013-03-12].

⁴⁹ The name of the mountain derives from the name prowling on the mountain Czarnohory area Wasył famous drummer boy czarnohorski Cossack headman? He was born in Peczeniżynie, probably in 1700 About the origin of the drummer boy we know that he came from families in need. In 1739 Oleksa shepherd Żołob to the question of judges was supposed to answer that the old drummer boy lived at his Twerdiuka host, as the bailiff. In court cards they wrote under the date 26 July 1739 in front of the judicial bench of the times of the reign of Stanislaus II 1764-1795 a host turned up name Hawryło Twerdiuk, at which Wasył lived in the chamber drummer boy. We are finding the first mentions of activity of the drummer boy and his gangs in documents from 1738. It is possible, and so to suppose, that brigand Oleksy began a little bit earlier. In the recalled year brigand the company operated in the area of the key peczeniżyńskiego and of the entire district office jabłonowskiego. Apart from the purely plundering profession they also dealt with "making the justice" amongst peasants. Still in 1739 for the request of the resident Small were him overcome the small arch into the defence against his brothers. One

30. hostel of the PTT Branch Of the times of the reign of Stanislaus II 1764-1795 on the mountain pasture Sheep's under Chomiakiem by Żeńca

Plans of construction of a Chomiaka⁵⁰ shelter below the summit amongst activists of the PTT Branch Of the times of the reign of Stanislaus II 1764-1795 were being considered already in 1924 however for his accomplishment they proceeded the yr in the summer the structure could be 1932 State Office of the physical education and the basic training carried out thanks to the received subvention. to the site a square put at 1350 m level a.sl was chosen On the day of 6 July 1934 in the moment of handing over the hostel for the use, the building had 25 accommodation places at its disposal in rooms with beds and with 2 common rooms being able to put 25-35 more distant persons up for the night on pallets, as the time gave the possibility of the one-time party to accommodation to 60 tourists. At the request of the first manager of the hostel of Franciszek Drabika, on the object received his sacrifices name of Dr. Mieczysław Orłowicz⁵¹.



1934 Group of people with Doctor Mieczysław Orłowicz (is keeping the walking stick) and with his mother arrived to celebrations of blessing the hostel. A visible musical folk band, the photo: Jan Jaroszyński, NAC sets, ref. 1 - S-3727-2.

In spite of the rainy weather about 300 persons arrived at the opening ceremony, including the advocate of construction of the hostel Dr. M. Orłowicz along with the mother and the sister.

In consecutive years 1936-1938 was being continued by the hostel performing essential works among others:

- a lightning conductor was put in,
- a foundation was converted,

of more interesting stories is regarding the aggression on the village Black Osławy, by Łączow, with which highland robbers organised 1738 at the end The rich host held the grand feast in honour of brigands, what this way he surprised them with, that had withdrawn from robbing. At first in the company Oleksy was also his brother Iwan, with which he prowled after entire Pokuciu. He reportedly brought robbed treasure to family Peczeniżyna. With spring of 1739 yr Oleksa and Iwan with comrades revelled in peczeniżyńskiej for inn. It isn't known it triggered the argument between brothers, but reached the row, as a result of, which highland robbers fought for. Iwan so firmly hit the brother with the axe in step, that Oleksa to the end of our days had stuffed. During the brawl also one of their comrades belonging to a gang died.

⁵⁰ J. Wierzbicki: *Trip on Chomiak (1544 m) 19 July 1898*, "Diary of the Tatra Company", 1899 No. 20.

⁵¹ *Blessing the hostel under Chomiakiem*, "Tourist PTT Inspection", 1934 No. 2, p. 14.

- a retaining wall was made,
- a ditch was made,
- they started work at construction of the well,
- they started work in order to take the spring water away,
- works of conducting a water system were performed and sewer,
- a postal agency was started,
- in 1937 from Podleśniowa a telephone link was led (PLN 1100 only allocated the management board of the hostel for wooden poles).



1934 yr, new hostel for them. of Doctor Mieczysław Orłowicz to Chomiaku in Gorganach built by the branch of the times of the reign of Stanislaus II 1764-1795 of the Polish Tatra Company in the background visible Syniak, the photo: Jan Jaroszyński, NAC sets, ref. 1 - S-3727-1.

Farmers employed by the PTT Branch Of the times of the reign of Stanislaus II 1764-1795 dealt with ordering the hostel, were it, in 1934-1936 years Tadeusz Fongelman, and after it from 1936 R. Majewski. Prices for accommodation amounted as similarly as in other PTT hostels which operated in the region i.e., by 50 gr. to PLN 1.50 behind accommodation. In the hostel boy scouts, for which by the hostel for organising campsites the tent square was received concessions⁵².

⁵² D. Dyląg: *Gorgany. Guide*, Pruszków 2008, p. 95.



1933 new hostel for them. of Doctor Mieczysław Orłowicz to Chomiaku in Gorganach built by the branch of the times of the reign of Stanislaus II 1764-1795 of the Polish Tatra Society, photo: From. Juris, NAC sets, ref. 1 - S-3770.

Also a Rescue Station run by the Society of disseminating the Skiing was located in a hostel. By the hostel from 1935 a red trail, after which they were wandering was appointed as Syniak (1664 m a.sl). In season 1937 / 38 the hostel on a one-off basis could accept 50 tourists in it 25 on beds and 25 on pallets. They were dawning on to the hostel from the railway station the Polish State Railways in Żeńcu⁵³.

31. Hostel of the Kaluga PTT Wheel under the Bee-keeping Peak (1937)

Hostel of the Kaluga PTT Wheel under the Bee-keeping Peak (1481 m a.sl) they put into operation with effort of activists of the PTT Branch Of the times of the reign of Stanislaus II 1764-1795 in 1937 In the short time after starting the object for unknown reasons went into having a Kaluga PTT Wheel. not entirely it is known, which place the hostel was located in, they according to some authors suppose they were set up in one of shooting boxes functioning in surroundings of the peak of the Bee-keeping Peak near the mountain pasture Payment. In the season the hostel had 1937-1938 with 20 accommodation places⁵⁴. By the hostel from 1936 leading tourist trails ran across the peak of the Bee-keeping Peak among others from Podlutego through Seredną (1639 m a.sl) on High (1805 m a.sl)⁵⁵.

SUMMARY

On the Gorgan area 31 hostels conducted activity and of ski-tourist stations, from what 17 led PTT, 10 TKN, 1 Przemyśl Company of Skiers, 1 together TKN and PTT, 1 together the Przemyśl Company of Skiers and 1 Warsaw ski club⁵⁶.

Among others descriptions of the following objects are among discussed biographical notes: Ski-tourist TKN Station in the Sanatorium of the Cooperative of Roman-Catholic Priests in the town Węldziarz-Maksymówka; Lodging Station of the Lvov PTT Branch in the forester's lodge in Wyszkwowie; Hostel of the Lvov PTT Branch on the Pass of by Wygody

⁵³ *Information ski calendar for the season 1937-1938 ...*, qtd. d., p. 85.

⁵⁴ There.

⁵⁵ D. Dyląg: *Gorgany. Guide Piast's*: publishing house "Rewasz", p. 96; *Regulations of mountain of the Tourist PTT Badge*, Cracow 1936, 78-79 p., access [2013-09-16]; *Information ski calendar for the season 1937-38*, Cracow, p. 85; *School holiday, XII hostels, year 1938*, Warsaw 1938, p. 90, access [2013-09-16]; *map the Ukrainian Carpathians*, www.e-gory.pl, the access [2013-09-16].

⁵⁶ *Information ski calendar for the season 1937-38 ...*, qtd. d., 85-87 p..

Wyszkowska (1937); Hostel of the Lvov PTT Branch in the town Świca by Wygody; Waste bunker of the Lvov PTT Branch on the Pass Sołotwinka (1936); Lodging station of the PTT Branch Of the times of the reign of Stanislaus II 1764-1795 in the inn M. Kapustianykowa in the town Broszniów by Krechowiec; Hostel of the Lvov PTT Branch in the Valley Mołody (1937); Ski-tourist TKN Station in the national shooting box Kuźmieniec by Osmoły; Hostel of the Lvov PTT Branch above Jał in the Valley Łomnicy; Station TKN Tourist - Ski in the national forester's lodge in the town of by Broszniowa Gifts; Hostel of the Lvov PTT Branch on Ruszczynie under the Sywuli peak (1938); Lodging Station of the PTT Branch Of the times of the reign of Stanislaus II 1764-1795 in the inn T. Srebuńczaka in the town Sołotwina by Nadwórnej; Ski-tourist TKN station in the lumber mill of Firma Polsko-Szwajcarski Przemysł Leśny SA in the Porohy town above Golden Bystrzycą by Nadwórnej; Lodging Station of the PTT Branch Of the times of the reign of Stanislaus II 1764-1795 at Grzegorz Julisza in the Porohy town above Golden Bystrzycą by Nadwórnej; Ski-tourist TKN Station in the forester's lodge of Polsko-Szwajcarski Przemysł Leśny SA in Łopusznej under Sywulą by Nadwórnej; two waste bunkers of the Kaluga PTT Wheel on the Borewka Pass under Sywulą by Nadwórnej (1930); Lodging Station of the PTT Branch Of the times of the reign of Stanislaus II 1764-1795 at Leon Grüssgotta in the town Nadwórna; Ski-tourist Station Of TKN and the PTT Branch Of the times of the reign of Stanislaus II 1764-1795 in the boarding house "Knollówka" of Leon Knolla by Nadwórnej Green at the town; Hostel of the Warsaw Club of Skiers in by Nadwórnej Rafajłowa (1938); Ski-tourist TKN station at the forester T. Ciesielski in by Nadwórnej Rafajłowa; Lodging PTT Station in the inn L. Wundermana in by Nadwórnej Rafajłowa; the PTN Hostel and TKN above the Pass by Nadwórnej Pantyriska; Ski-tourist TKN Station in the national forester's lodge in the Durniniec by Rafajłowej town; Ski-tourist TKN Station in the national forester's lodge in the town Kruhły Łuh under by Rafajłowej Bratkowska; PTN Hostel in the Steryszora by Rafajłowej town (1935); Ski-tourist TKN Station in the national forester's lodge in the Ozirny town in the Valley Doużyńca by Nadwórnej; Ski-tourist TKN Station in the national forester's lodge in the town Sołoniec in the Valley Doużyńca by Nadwórnej; Hostel of the PTT Branch Of the times of the reign of Stanislaus II 1764-1795 on the mountain pasture Niżna under Doboszanką by Nadwórnej (1927); Hostel of the PTT Branch Of the times of the reign of Stanislaus II 1764-1795 under Doboszanką at Klauzie Zubrynki; Hostel of the PTT Branch Of the times of the reign of Stanislaus II 1764-1795 on the mountain pasture Sheep's under Chomiakiem by Żeńca; Hostel of the Kaluga Kaluga Wheel under the Bee-keeping Peak (1937).

According to the *Information ski calendar for the season 1937-38*, described hostels and stations in season 1937 / could on a one-off basis grant 1938 about 579 accommodation in it 326 on beds, 253 on pallets. On the discussed area they were dawning on to hostels and the station from railway stations the Polish State Railways of the following towns: Broszniów, Jaremcze, Nadwórna, of Stanisławs, Convenience, Żeniec, and to the part with routes of the forest queue⁵⁷.

⁵⁷ There.